

# Analysis of U.S. Military Deaths 1980-2006

The Sheet named DOD data is composed of data from the D.O.D. Death\_Rates.pdf file.

The file can be found at [http://siadapp.dmdc.osd.mil/personnel/CASUALTY/Death\\_Rates.pdf](http://siadapp.dmdc.osd.mil/personnel/CASUALTY/Death_Rates.pdf)

The rest of the contents of this file are analysis by Paul Hutchinson July 2007

© 2007 by Paul L. Hutchinson and licensed under a Creative Commons Attribution-NonCommercial-ShareAlike 3.0 Unported

<http://creativecommons.org/licenses/by-nc-sa/3.0/>

# U.S. ACTIVE DUTY MILITARY DEATHS - 1980 through 2006 (as of February 28, 2007)

[http://siadapp.dmdc.osd.mil/personnel/CASUALTY/Death\\_Rates.pdf](http://siadapp.dmdc.osd.mil/personnel/CASUALTY/Death_Rates.pdf)

Calendar Year	Active Duty	Full-Time (est) Guard+Reserve	Selected Reserve FTE	Total Military FTE	Total Deaths	Accident	Hostile Action	Homicide	Illness	Pending	Self Inflicted	Terrorist Attack	Undetermined		
1980	2050758	22000	86872	2159630	2392	1556	0	174	419	0	231	1	11	Carter	1977-1981
1981	2093032	22000	91719	2206751	2380	1524	0	145	457	0	241	0	13	Reagan	1981-1989
1982	2112609	41000	97458	2251067	2319	1495	0	108	446	0	254	0	16		
1983	2123909	49000	100455	2273364	2465	1413	18	115	419	0	218	263	19		
1984	2138339	55000	104583	2297922	1999	1293	1	84	374	0	225	6	16		
1985	2150379	64000	108806	2323185	2252	1476	0	111	363	0	275	5	22		
1986	2177845	69000	113010	2359855	1984	1199	2	103	384	0	269	0	27		
1987	2166611	71000	115086	2352697	1983	1172	37	104	383	0	260	2	25		
1988	2121659	72000	115836	2309495	1819	1080	0	90	321	0	285	17	26		
1989	2112128	74200	117056	2303384	1636	1000	23	58	294	0	224	0	37	Bush	1989-1993
1990	2046806	74250	137268	2258324	1507	880	0	74	277	0	232	1	43		
1991	1943937	70250	184002	2198189	1787	931	147	112	308	0	256	0	33		
1992	1773996	67850	111491	1953337	1293	676	0	109	252	0	238	1	17		
1993	1675269	68500	105768	1849537	1213	632	0	86	221	0	236	29	9	Clinton	1993-2001
1994	1581649	65000	99833	1746482	1075	544	0	83	206	0	232	0	10		
1995	1502343	65000	94585	1661928	1040	538	0	67	174	0	250	7	4		
1996	1456266	65000	92409	1613675	974	527	1	52	173	0	188	19	14		
1997	1418773	65000	94609	1578382	817	433	0	42	170	0	159	0	13		
1998	1381034	65000	92536	1538570	827	445	0	26	168	10	161	3	14		
1999	1367838	65000	93104	1525942	796	436	0	37	150	13	145	0	15		
2000	1372352	65000	93078	1530430	758	398	0	34	138	0	151	17	20		
2001	1384812	65000	102284	1552096	891	437	3	49	185	1	140	55	21	Bush	2001-2009
2002	1411200	66000	149942	1627142	999	547	18	51	190	6	160	0	27		
2003	1423348	66000	243284	1732632	1228	440	344	36	207	16	167	0	18		
2004	1411287	66000	234629	1711916	1874	604	739	46	270	19	188	0	8		
2005	1378014	66000	220000	1664014	1942	632	739	49	281	72	150	0	19		
2006	1371533	66000	168000	1605533	1858	465	753	30	205	238	155	0	12		

\*Official Department of Defense end-strengths as of December 31 for military pay accounts. Excludes full time Guard and Reserve.

\*\*Full time equivalent (FTE) is based on official Department of Defense fiscal year end selected reserve strength (10% of the figure is used to estimate days on Active Duty).

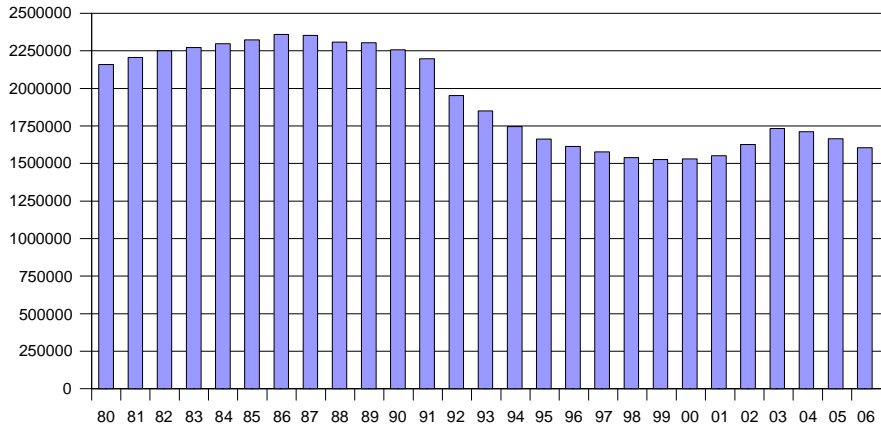
Prepared by: Defense Manpower Data Center  
Statistical Information Analysis Division

\*\*\* Data subject to change - as of Feb 28, 2007 (reflects preliminary counts for 2006 and revised figures for 2004 and 2005).

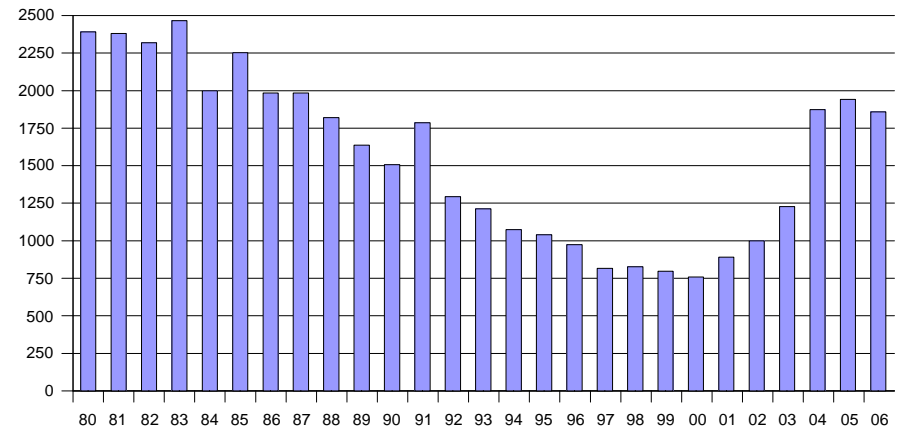
**PASSWORD = original**



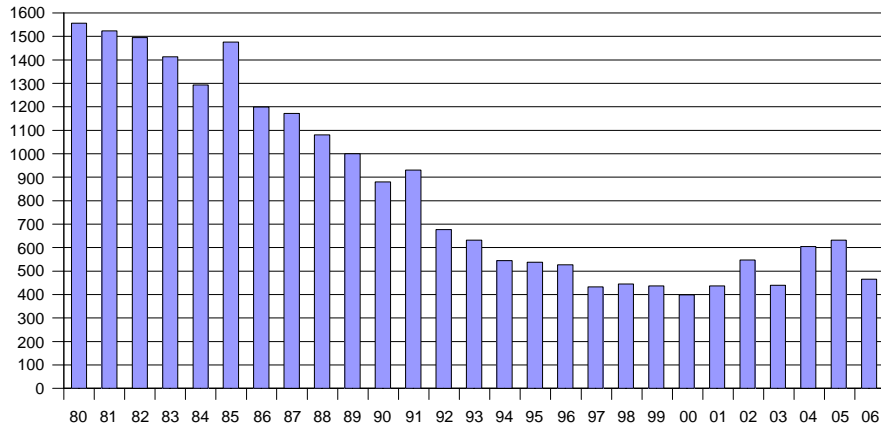
### Total Military FTE by year



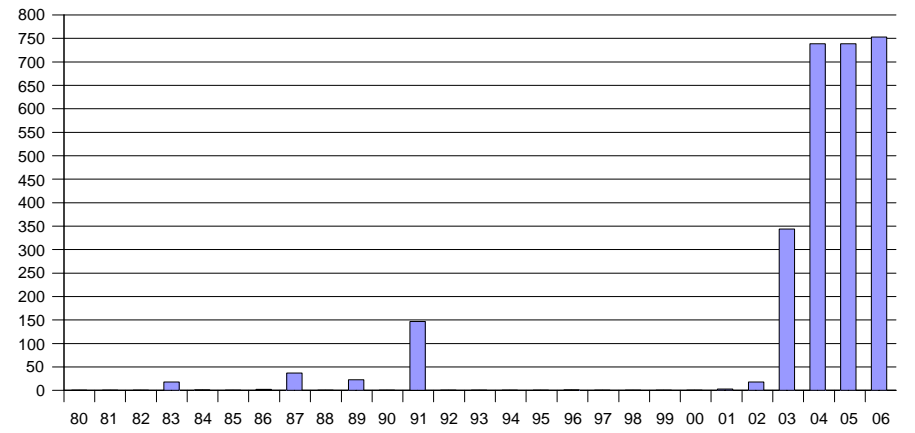
### Total deaths by year



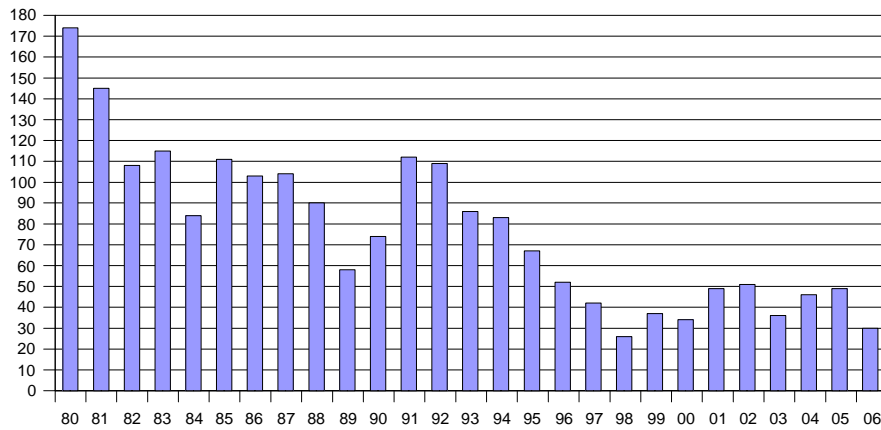
### Accidental deaths by year



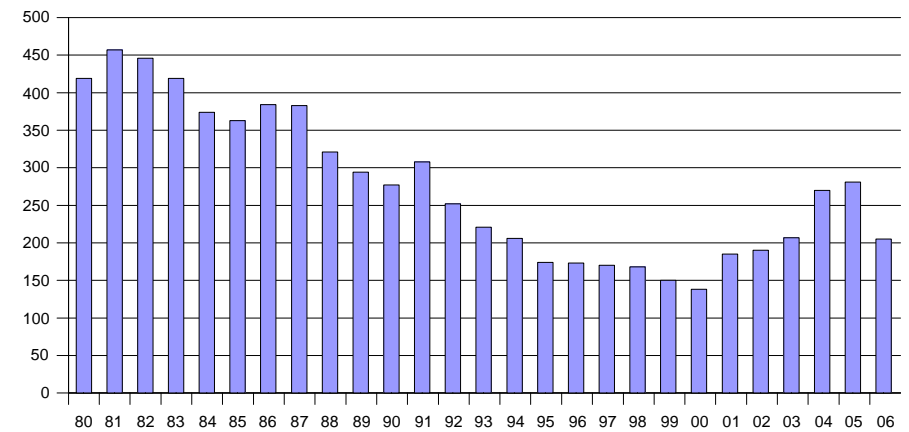
### Hostile Action deaths by year



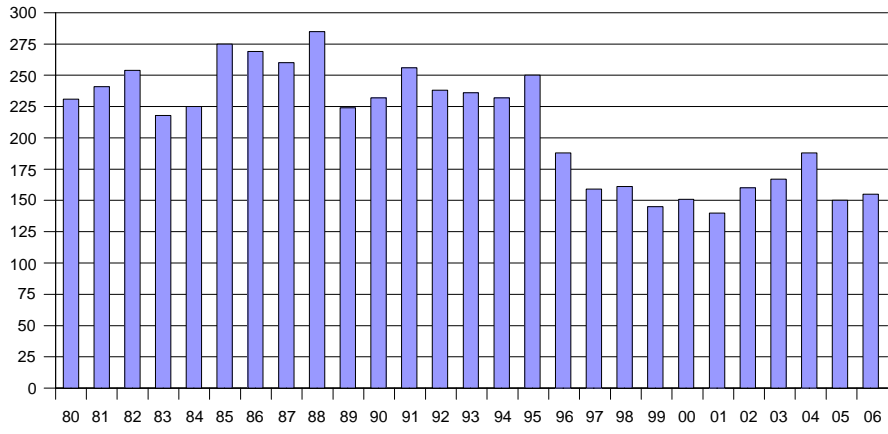
### Homicide deaths by year



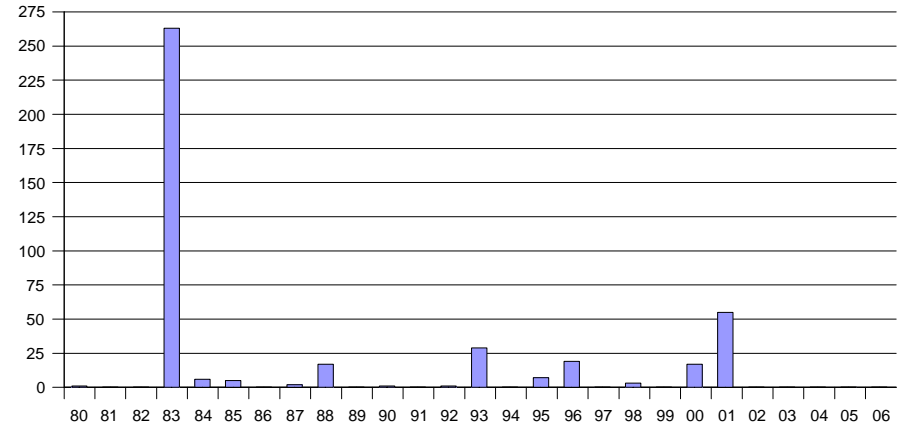
### Illness deaths by year



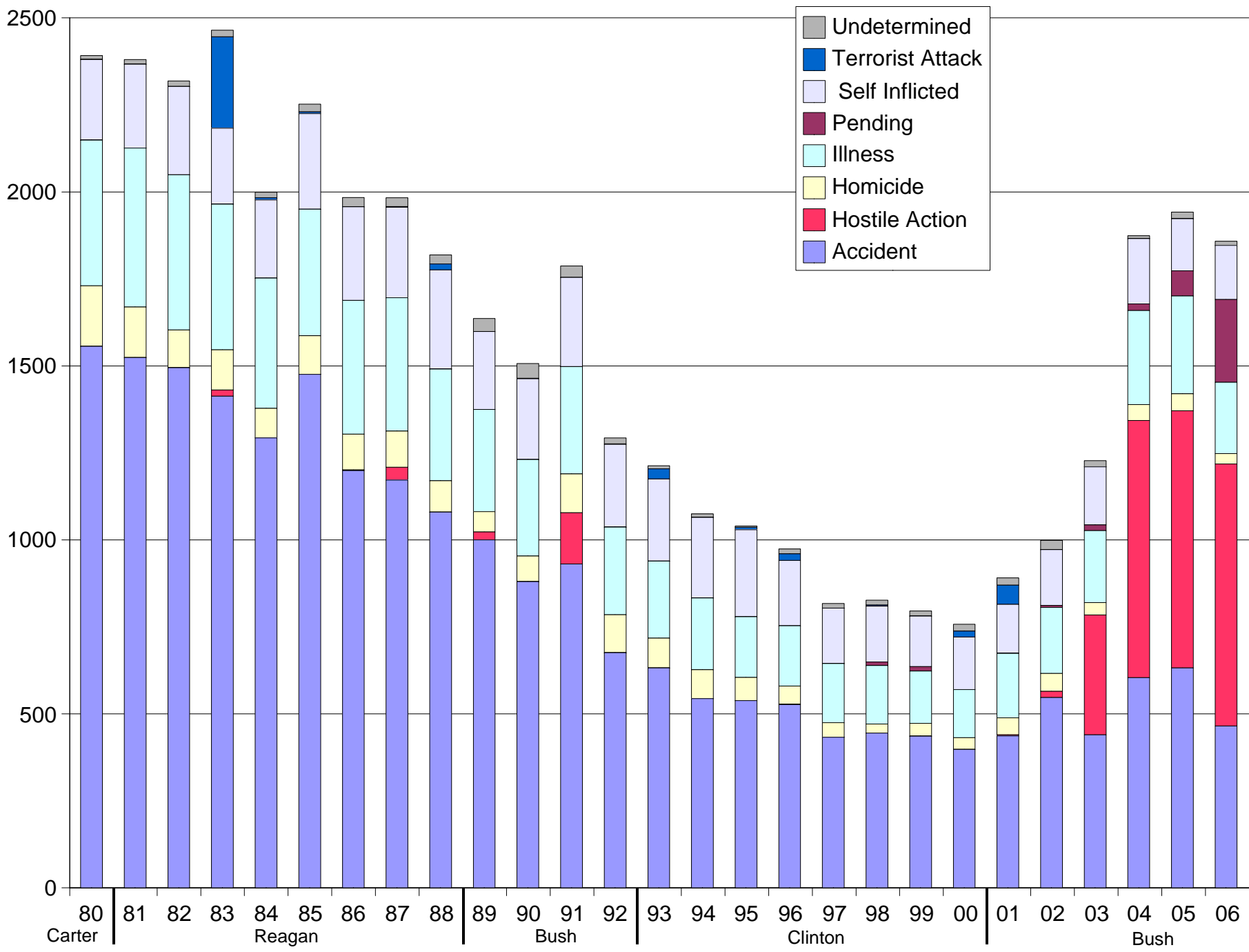
Self Inflicted deaths by year



Terrorist Attack deaths by year



# U.S. Military deaths by year and cause



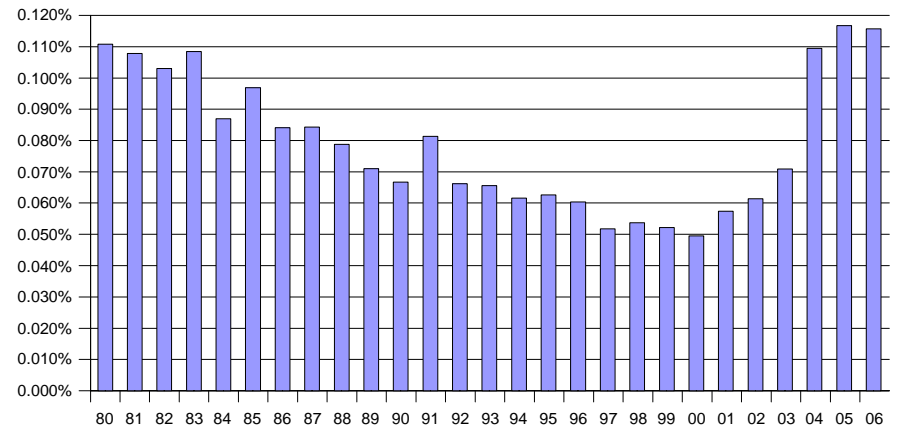
**U.S. ACTIVE DUTY MILITARY DEATHS - 1980 through 2006 (as of February 28, 2007)**

[http://siadapp.dmdc.osd.mil/personnel/CASUALTY/Death\\_Rates.pdf](http://siadapp.dmdc.osd.mil/personnel/CASUALTY/Death_Rates.pdf)

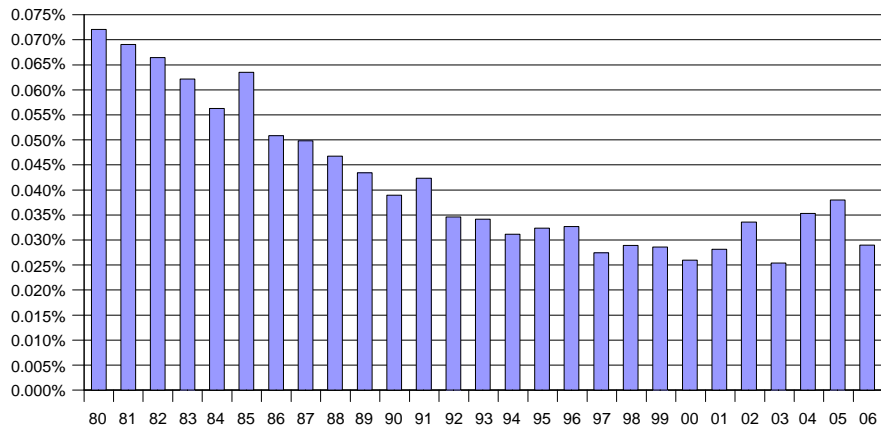
Calendar Year	Total Deaths	Accident	Hostile Action	Homicide	Illness	Pending	Self Inflicted	Terrorist Attack	Undetermined		
80	0.111%	0.072%	0.000%	0.008%	0.019%	0.000%	0.011%	0.000%	0.001%	Carter	1977-1981
81	0.108%	0.069%	0.000%	0.007%	0.021%	0.000%	0.011%	0.000%	0.001%	Reagan	1981-1989
82	0.103%	0.066%	0.000%	0.005%	0.020%	0.000%	0.011%	0.000%	0.001%		
83	0.108%	0.062%	0.001%	0.005%	0.018%	0.000%	0.010%	0.012%	0.001%		
84	0.087%	0.056%	0.000%	0.004%	0.016%	0.000%	0.010%	0.000%	0.001%		
85	0.097%	0.064%	0.000%	0.005%	0.016%	0.000%	0.012%	0.000%	0.001%		
86	0.084%	0.051%	0.000%	0.004%	0.016%	0.000%	0.011%	0.000%	0.001%		
87	0.084%	0.050%	0.002%	0.004%	0.016%	0.000%	0.011%	0.000%	0.001%		
88	0.079%	0.047%	0.000%	0.004%	0.014%	0.000%	0.012%	0.001%	0.001%		
89	0.071%	0.043%	0.001%	0.003%	0.013%	0.000%	0.010%	0.000%	0.002%	Bush	1989-1993
90	0.067%	0.039%	0.000%	0.003%	0.012%	0.000%	0.010%	0.000%	0.002%		
91	0.081%	0.042%	0.007%	0.005%	0.014%	0.000%	0.012%	0.000%	0.002%		
92	0.066%	0.035%	0.000%	0.006%	0.013%	0.000%	0.012%	0.000%	0.001%		
93	0.066%	0.034%	0.000%	0.005%	0.012%	0.000%	0.013%	0.002%	0.000%	Clinton	1993-2001
94	0.062%	0.031%	0.000%	0.005%	0.012%	0.000%	0.013%	0.000%	0.001%		
95	0.063%	0.032%	0.000%	0.004%	0.010%	0.000%	0.015%	0.000%	0.000%		
96	0.060%	0.033%	0.000%	0.003%	0.011%	0.000%	0.012%	0.001%	0.001%		
97	0.052%	0.027%	0.000%	0.003%	0.011%	0.000%	0.010%	0.000%	0.001%		
98	0.054%	0.029%	0.000%	0.002%	0.011%	0.001%	0.010%	0.000%	0.001%		
99	0.052%	0.029%	0.000%	0.002%	0.010%	0.001%	0.010%	0.000%	0.001%		
00	0.050%	0.026%	0.000%	0.002%	0.009%	0.000%	0.010%	0.001%	0.001%		
01	0.057%	0.028%	0.000%	0.003%	0.012%	0.000%	0.009%	0.004%	0.001%	Bush	2001-2009
02	0.061%	0.034%	0.001%	0.003%	0.012%	0.000%	0.010%	0.000%	0.002%		
03	0.071%	0.025%	0.020%	0.002%	0.012%	0.001%	0.010%	0.000%	0.001%		
04	0.109%	0.035%	0.043%	0.003%	0.016%	0.001%	0.011%	0.000%	0.000%		
05	0.117%	0.038%	0.044%	0.003%	0.017%	0.004%	0.009%	0.000%	0.001%		
06	0.116%	0.029%	0.047%	0.002%	0.013%	0.015%	0.010%	0.000%	0.001%		

% of total population

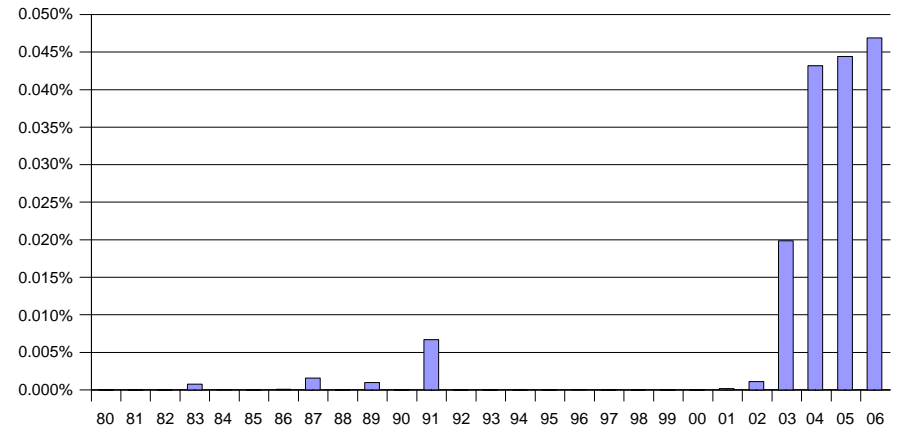
Total deaths by year



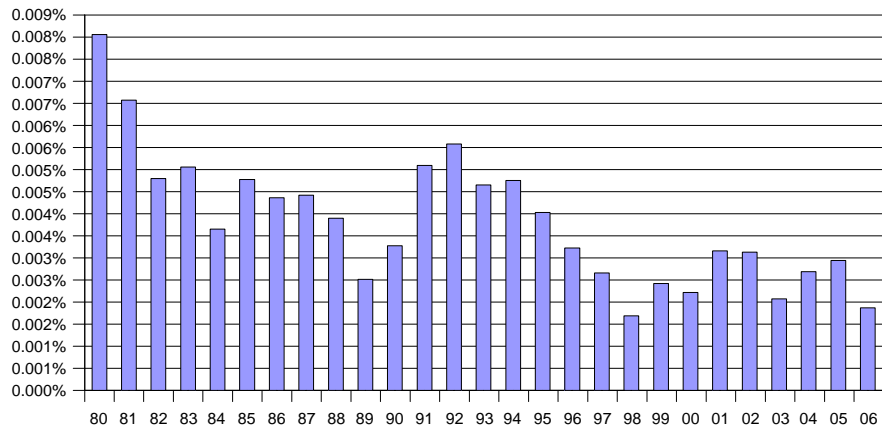
Accidental deaths by year



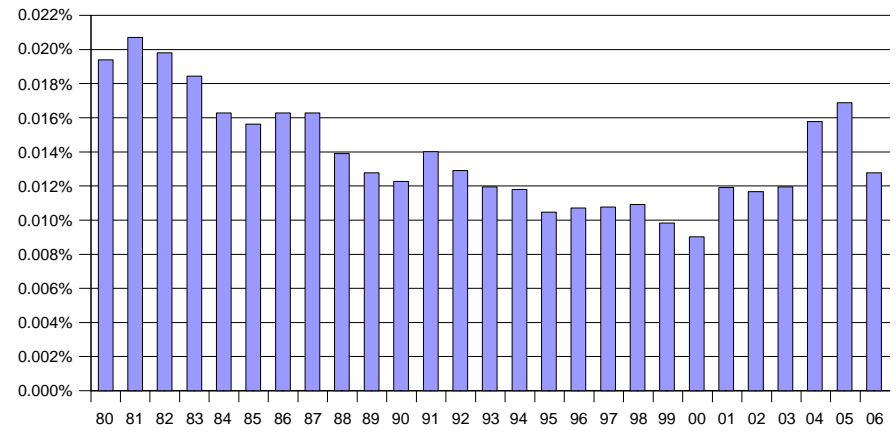
Hostile Action deaths by year



Homicide deaths by year

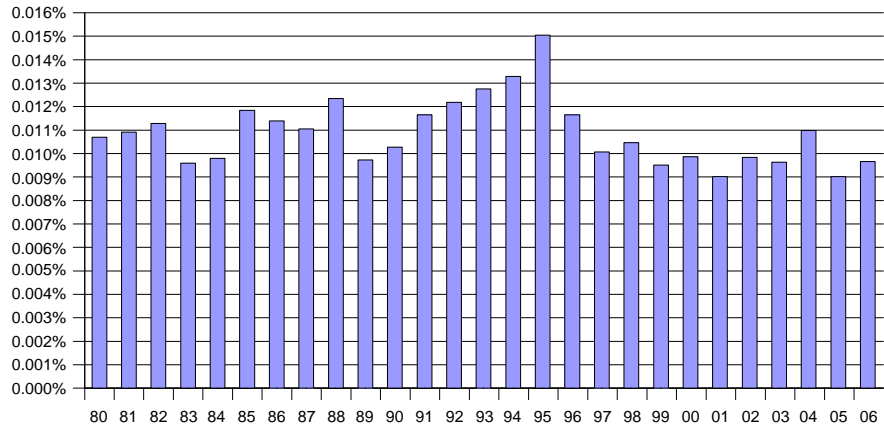


Illness deaths by year

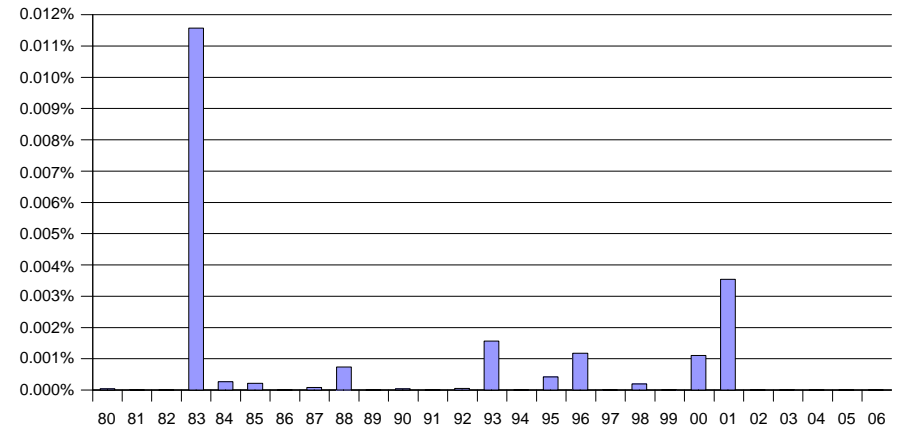




Self Inflicted deaths by year



Terrorist Attack deaths by year



# U.S. Military deaths by year and cause (% of total Military)

